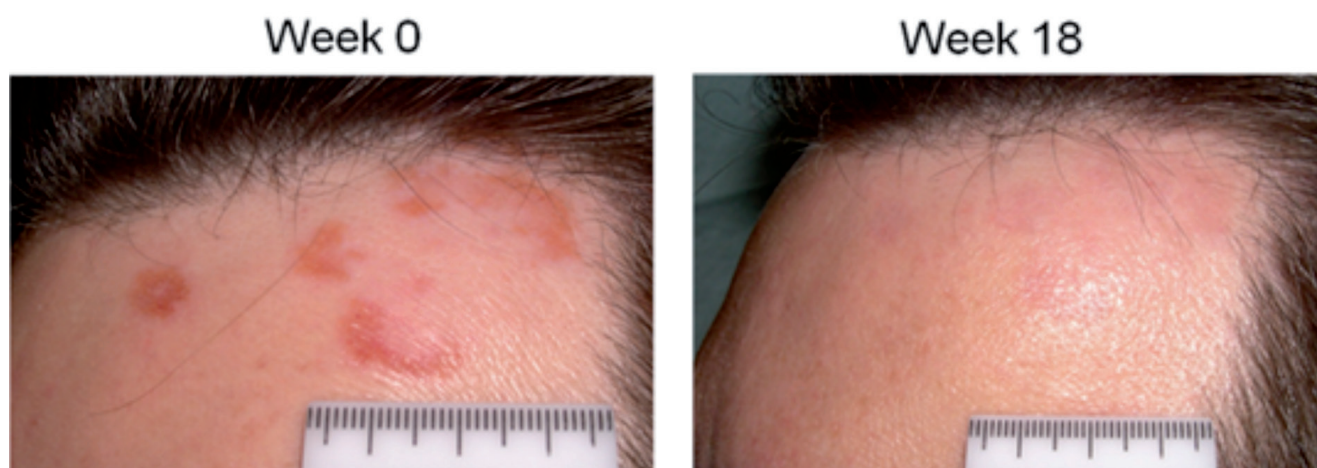


## Online-Only Supplement

**eTable 1.** Change in SASI scores in target quadrant at weeks 12 and 24

SASI feature	Change in SASI score from baseline									
	Placebo (n=5)		Infliximab (n=12)		P value	Placebo (n=5)		Infliximab (n=12)		P value
	median	Range	median	range		median	range	median	range	
Erythema	0	(-2,0)	0	(-2,1)	0.74	-1	(-2,0)	0	(-2,1)	0.26
Induration	0	(-1,0)	0	(-2,1)	0.96	0	(-1,0)	0	(-2,0)	0.81
Desquamation	0	(-1,0.5)	-0.5	(-2,0)	0.15	0	(-2,0)	-0.5	(-2,1)	0.57
Area	0	(-1,0)	-0.5	(-4,0)	0.27	0	(-1,0)	-1	(-4,0)	0.18

SASI, sarcoidosis activity and severity index



**eFig. 1.** Cutaneous facial lesion. A facial lesion in the left upper quadrant of a study patient's face is shown. The photographs of the lesion were taken before and after infliximab therapy. The original lesion had sarcoidosis activity and severity index (SASI) induration score=2, SASI erythema score=4, SASI desquamation score=1, and SASI area score=3. After 18 weeks of 3 mg/kg infliximab therapy, SASI induration score=1, SASI erythema score=1, SASI desquamation score=1, and SASI area score=3. For the photograph comparison, all 3 readers scored the paired photos as "better" after treatment